

EBrick

Rack Mounted LV Battery System

Modular Design and Easy Installation: EBrick's rack-mount design allows for customizable and simple installation, with the flexibility to connect multiple units in parallel. This reduces installation time and costs.

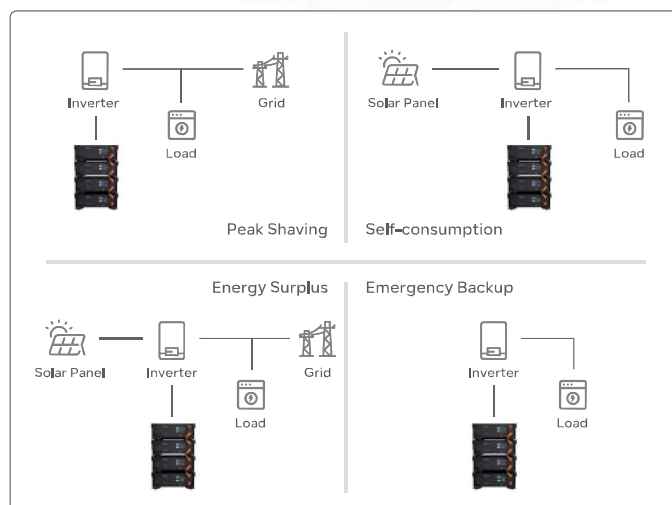
Wi-Fi Connectivity and App Control: EBrick features Wi-Fi connectivity, enabling users to remotely monitor and control the system via a dedicated app. This enhances user experience with real-time monitoring and efficient system management.

Stable LiFePO4 Battery Technology: EBrick uses reliable lithium iron phosphate (LiFePO4) batteries, offering up to 8000 cycles. Its efficient battery management system ensures high performance and safety.

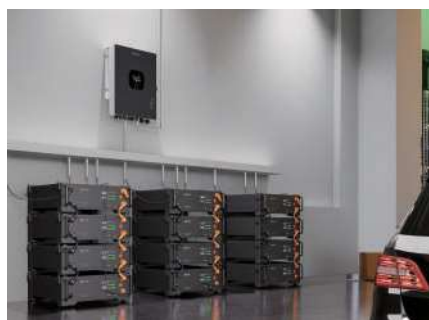


System Layout

Product Details



Application Scenario



Battery Energy Storage		General Parameters	
Battery Chemistry	LiFePO4	Scalability	Max. 31 systems in parallel
Cell Capacity (Ah)	100	Storage Conditions	-20°C ~ 55°C(0°C ~ 35°C Recommended) Up to 90%RH, non-condensing Initial SoC: 50%
Nominal Energy (kWh)	5.12	Operating Temperature	Charge: 0°C ~ 50°C Discharge: -20°C ~ 50°C
Output Power (kW)	4.8	Cooling	Natural Cooling
Default Voltage (V)	51.2	Max. Altitude	2000m / 6561ft
Voltage Range (V)	43.2 ~ 59.2	Cycle Life	8000 Cycles
Max. Operation Current (A)	95	Communication	RS485, CAN, WiFi
Primary Overcurrent Protection (A)	98@10S	System Characteristic	
Secondary Overcurrent Protection (A)	120@30mS	Battery Model	R-EB005161
Max. Charging Voltage (V)	58.4	Battery Compliances	UL1973, UL9540A, IEC 62619, UN 38.3 CEI 0-21, UKCA, EN-61000, EN-62311
Discharge Cut-off (V)	43.2	Installation Method	Rack Mounting
Recommended Charging Voltage (V)	56.8	Installation Scene	Indoor
Dimension (W*D*H)	440*420*132mm 17.3*16.5*5.2in	IP Rating	IP20
Net Weight (Approximate)	45kg 99.2lb	Warranty [1]	10 Years

[1] Please refer to the warranty letter for details

■ Packaging & Shipping Details

